



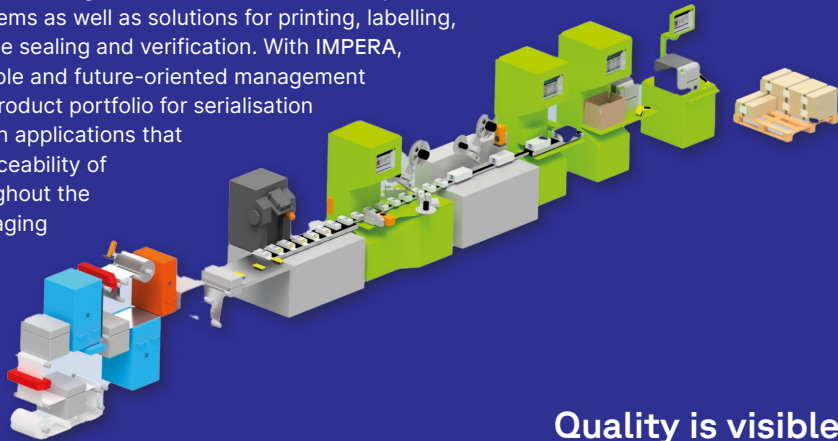
Inspection Systems for Pharma, Cosmetics and Food



Quality is visible.

With over 4,000 installations worldwide and 35 years of experience in product and packaging inspection, scanware electronic GmbH is a leading supplier of optical inspection systems for the pharmaceutical, cosmetics and food industries.

As one of the few suppliers on the market able to do so, we equip the packaging process along the entire line with efficient product inspection systems as well as solutions for printing, labelling, tamper evidence sealing and verification. With IMPERA, we have a reliable and future-oriented management system in our product portfolio for serialisation and aggregation applications that ensures the traceability of products throughout the complete packaging and supply chain.



Quality is visible.



Management
Line Management



Packaging Inspection
Pinhole Detection
Colour Parenterals Inspection



Blister & Product Inspection
3D Product Inspection
Colour Product Inspection
High-Resolution Product Inspection
Bulk Inspection



Code, Text & Graphics Inspection
Print Inspection
Code Inspection
Code Inspection on Convex Surfaces
Ring Code Inspection



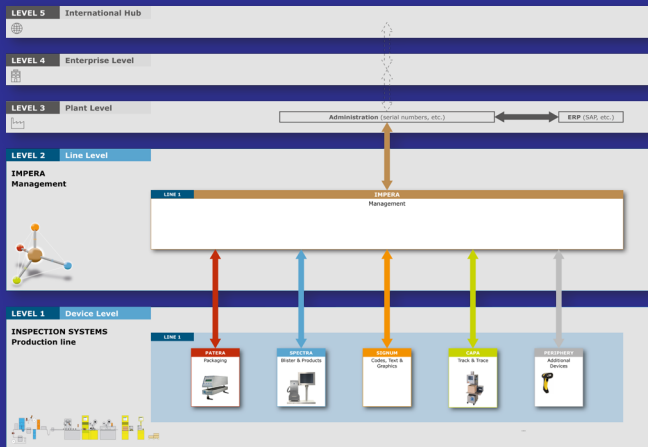
Track & Trace
Orbital Inspection
Mark & Verify Station
Tamper-Evidence Station
Bundle Inspection
Case Inspection
Mobile Base Station



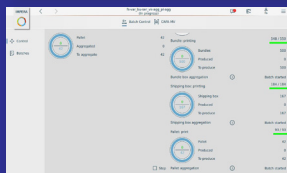
Service and System Check
Maintenance Contracts



IMPERA Management



Quality is visible.

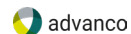


Line Management

Area of Application

- Machine and device control on packaging lines
- Serialisation, aggregation and rework
- Mark & Verify of folding boxes, displays and shipping boxes

Level 3 Interfaces



Highlights

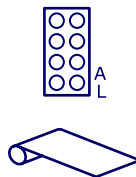
- Modular, upgradable and intuitive
- Compatible with all scanware products
- User interface can be configured to specific preferences
- All managed Level 1 systems integrated onto the GUI
- Decentralised real-time data communication and centralised management of batch data
- Centralised user management/automated line management



Quality is visible.

PATERA FOCON Pinhole Detection

Area of Application

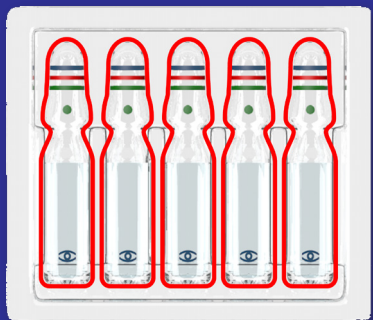


Highlights

- Easy to integrate on new or existing blister and sachet machinery
- Large, easy to read touch screen
- 25, 50, 100, 250 and 500 μm - adjusted electronically
- Access control as per GMP requirements
- 200 - 1,600 mm width



PATERA Packaging Inspection



Quality is visible.



PATERA CL

Colour Parenterals Inspection

Area of Application



- Number of coloured rings
- Ring colours
- Order of rings
- Label presence



- Needle cap
- Finger grips
- Piston
- Needle
- Label presence



- Cap colour and presence
- Label presence



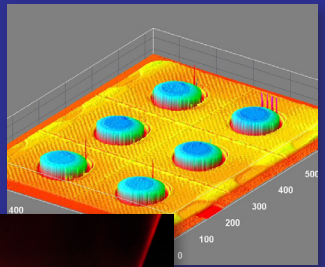
- Cap colour and presence
- Label presence

Highlights

- Optimised algorithms for a variety of products
- High-end cameras for precise colour separation
- Extraordinary speed and reliability
- Ideal for unique products and mixed product packaging
- Quick product changeovers on the line
- Adjustable illumination for homogenous and reproducible lighting



SPECTRA Blister & Product Inspection

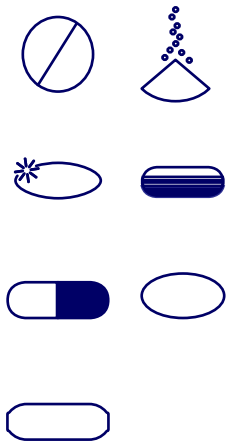


Quality is visible.



SPECTRA 3D 3D Product Inspection

Area of Application



Inspection Criteria

- Shape
- Height
- Volume
- Presence
- Size
- Position
- Broken products
- Overfilling
- Consecutive error

Highlights

- Inspection of pocket form
- Detection of stacked product and underneath the product
- Broken products next to and underneath the product
- Capped multi-layered tablets
- Low-contrast combinations such as grey tablet in aluminium blister



SPECTRA Blister & Product Inspection

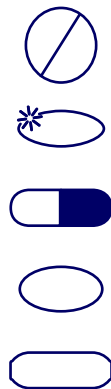


Quality is visible.



SPECTRA CL Colour Product Inspection

Area of Application



Inspection Criteria

- Colour
- Presence
- Size
- Shape
- Perimeter
- Position
- Broken products
- Overfilling
- Consecutive error

Highlights

- Magnificent speed
- Multitude of analytical options to reduce product ejection
- All parameters can be used simultaneously
- 16 adjustable levels of illumination - homogenous and reproducible
- Real-time operating system QNX®
- Source for statistical data
- Real time evaluation data export
- Can be upgraded to SPECTRA HR

Also available as monochrome system for more basic applications



SPECTRA Blister & Product Inspection



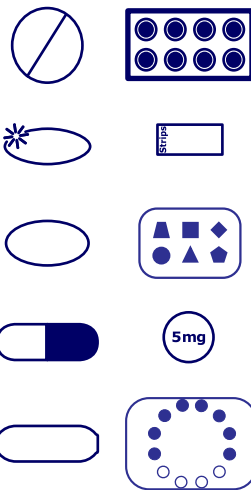
Quality is visible.



SPECTRA HR

High Resolution Product Inspection

Area of Application



Inspection Criteria

- Colour
- Presence
- Size
- Shape
- Perimeter
- Position
- Broken products
- Overfilling
- Surface defects
- Consecutive error
- Particles
- Print on product

Highlights

- Detects smallest defects
- All blister geometries and tricky product-foil combinations
- Applicable for sealed products
- Multi-camera systems
- Magnificent speed
- Multitude of analytical options
- All parameters can be used simultaneously
- 16 adjustable levels of illumination - homogenous and reproducible
- Real-time operating system QNX®
- Source for statistical data to reduce product ejection
- Real time evaluation data export



SPECTRA Blister & Product Inspection

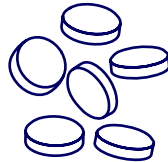


Quality is visible.



SPECTRA Bulk Bulk Inspection

Area of Application



Inspection Criteria

- Colour
- Size
- Shape
- Broken products

Highlights

- Up to 1 million products per hour
- Large machine widths possible
- For all common slat counters
- For all ETCs with vibratory conveyors
- Detection of cross-contamination, broken product and foreign matter
- Exact position information of faulty products for individual rejection
- Multi-camera systems
- Multiple evaluations for each products so products jumping lanes do not have to be ejected
- Fast setup times



SIGNUM Code, Text & Graphics Inspection



Quality is visible.

SIGNUM HR Print Inspection

Area of Application



Inspection Criteria

- Letters
- Numbers
- Graphics i.e.:
 - Company information
 - Product data, logos, pictograms or symbols
 - Barcodes and 2D-Codes, i.e. DataMatrix

Highlights

- Fast evaluation of data due to smart unicode library
- Automatic recognition of character orientation
- Copy feature for fast teach-in
- Automatic teach-in with pdf
- Error analysis in the format test
- Multi-camera systems for inspection of large area prints
- Suitable for sachet and stickpack machinery
- Large area foil inspection possible
- Suitable for Late Stage Customisation and small area recognition



SIGNUM Code, Text & Graphics Inspection



Quality is visible.



SIGNUM 2DC Code Inspection

Area of Application



Inspection Criteria

1D-Codes:

- EAN 8
- EAN 13
- Code 32
- Code 39
- Code 128
- Interleaved 2/5
- DataBar
- Pharmacode

2D-Codes:

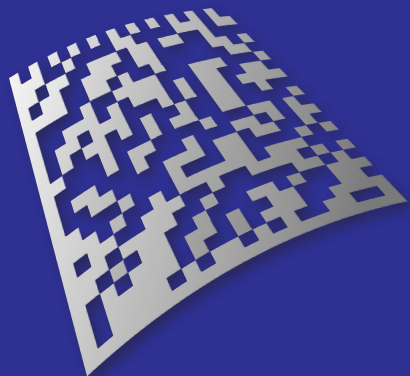
- DataMatrix
- QR

Highlights

- Easy, user-friendly, guided teach-in procedure
- Error analysis enables the optimisation of code printing
- High reading speed
- Reads up to 80 DataMatrix and 150 barcodes per second
- Format administration
- Integration of multiple code readers available



SIGNUM Code, Text & Graphics Inspection



Quality is visible.



SIGNUM 1DC

Code Inspection on Convex Surfaces


Area of Application

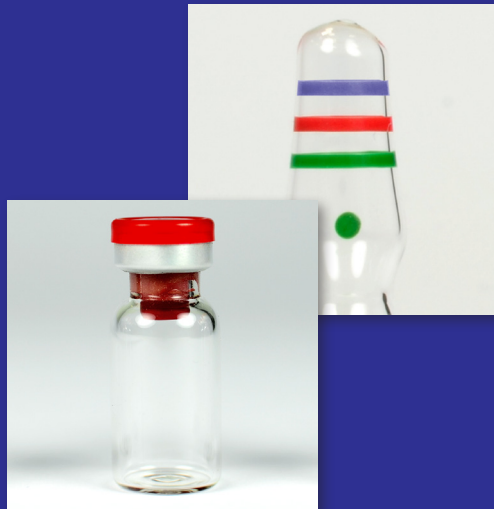


Inspection Criteria

- Pharmacode
- Miniature Pharmacode
- Printer's marks

Highlights

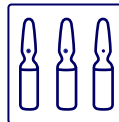
- Distortions of code due to tube shape are incorporated into algorithm
- Tube orientation is flexible and detected by the system
- Extraordinarily high speed and reaction time after the reading
- Ideal add-on to existing packaging lines
- Integration into the newest  visualisation
- Display of the current reading and a history of the 15 previous results



Quality is visible.

SIGNUM CL Ring Code Inspection

Area of Application



Inspection Criteria

- Ampoules: Number of colour rings, ring colours, ring sequence, width, distance between rings, gaps and overall length of all rings
- Vials: Presence and colour of cap
- At the same time, the presence and colour of the label is inspected

Highlights

- Real colour recognition
- Inspection of ringcode and label in one single step
- Electronically controllable W-LED illumination for reproducible light conditions
- Two illumination levels can be evaluated in immediate succession
- Multi-camera systems possible



CAPA Track & Trace



Quality is visible.



CAPA 360^{AI} Orbital Inspection

Area of Application



Inspection Criteria

- 2D codes: Print and coded information
- UV helper codes: Print and reading
- Bottle cap and label: Placement

Highlights

- Serialisation available
- Maximum speed of 120 bottles per minute
- Prevents scratches on bottles and the codes which reduces ejection
- High resolution 6-camera system utilising newest technology
- Aggregation in bundling machines or topper loader possible
- Typical Continuous Ink Jet (CIJ) printers for helper code print are integrated
- Equipped with WLED illumination and UV illumination

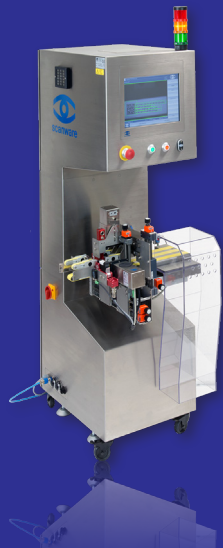
Data and Line Management powered by



IMPERA



CAPA Track & Trace



Quality is visible.



CAPA MV

Mark & Verify Station

Area of Application



Inspection Criteria

- 1D and 2D Codes e.g. Code 128 and DataMatrix
- Plain text e.g.
 - Lot
 - Expiry date
 - GTIN
 - Serial numbers
- Print quality

Highlights

- Precise folding box guidance for precise print placement
- Supports GS1, IFA Coding, CIP 13, ITS, Bollini IPZS, Royal Vignette Belge and China E-Coding
- Serialisation available
- Possible as compact add-on solution

Data and Line Management powered by



IMPERA



CAPA Track & Trace



Quality is visible.



CAPA TE

Tamper-Evidence Station

Area of Application



Inspection Criteria

- Label presence
- Label position

In combination with
CAPA MV

- Print (1D and 2D codes
as well as plain text)

Highlights

- Applicable for all common closing patterns
- High positioning accuracy
- Change of label roll is possible during ongoing operation
- Serialisation available

Data and Line Management powered by



IMPERA



CAPA Track & Trace

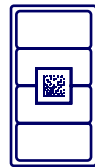


Quality is visible.



CAPA BI Bundle Inspection

Area of Application



Inspection Criteria

- 1D and 2D Codes
- Completeness

Highlights

- Different camera positions possible (top, front, rear)
- Supports aggregation

Data and Line Management powered by



IMPERA



CAPA Track & Trace

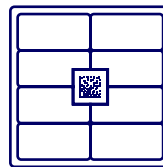


Quality is visible.



CAPA CI Case Inspection

Area of Application



Inspection Criteria

- Readability of 1D and 2D codes e. g. Code 128 and DataMatrix
- Completeness

Highlights

- Implementation of brushless motors
- Automatic adjustment of camera and illumination module when adding a layer
- Movable contact edge
- Supports serialisation
- Supports aggregation

Data and Line Management powered by



IMPERA



CAPA Track & Trace



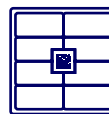
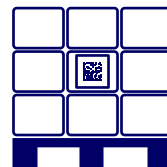
Quality is visible.



CAPA MB

Mobile Base Station

Area of Application



Inspection Criteria

- Labels
 - Presence
- 1D und 2D Codes
 - Content

Highlights

- Can be used for various requirements
- Manual aggregation in cases
 - Manual aggregation on pallets
 - Rework
- Up to two printer attachments
 - Possible as compact add-on solution

Data and Line Management powered by



IMPERA



CURA Service and System Check



Quality is visible.



CURA

Maintenance Contracts

Description

So that your scanware systems run to optimum and you can use all scanware advantages, we offer you a service for preventive system maintenance. Our service experts come to you in periodic intervals and issue our seal of quality after successful testing.

Our Service

- Hardware verification, such as
 - Function check
 - Calibration
- Software verification, such as
 - Backup of formats, users, etc. for the customer
- Additional service, such as
 - Tips and brief instructions
 - Security check
 - Information about new features

Your Benefits

- The reliability of your scanware systems is increased even further
- The availability of your production facilities increases
- The scanware system data is always up to date
- Maintenance times and costs can be budgeted
- Knowledge of your team increases

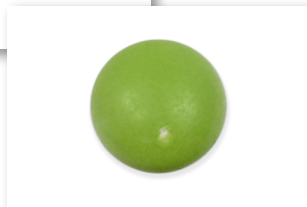


Application Development

Your Challenge - Japan Quality Requirements

Smallest defects such as:

- Polishing errors
- Particles on products
- Surface defects



Your Challenge - Contraceptives

- Various colours in one blister
- Various shapes within the same blister
- Uncommon blister shapes like dialpacks
- Special shapes, i.e. angular tablets with rounded edges, d-shapes or triangles



Our Solution

SPECTRA HR

High Resolution Product Inspection

Multi-camera system with water cooling

- Inspection of various products and shapes in same blister possible
- Detection of smallest differences in colour and shape
- All blister geometries can be recognised
- Applicable for post-seal inspection
- Extraordinarily high colour separation
- Detection of minimal defects

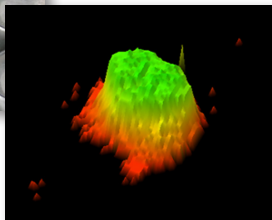
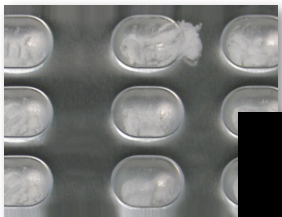




Application Development

Your Challenge - Dry Powder

- Powder in partially filled pockets, i.e. pellets
- Powder in pockets filled to the brim
- Pollution of the sealing area



Our Solution



SPECTRA 3D

3D Product Inspection

- Inspection of minimal dosage with low tolerances
- Detection of pollution in combination with SPECTRA HR
- Volume data is saved for analysis of productivity



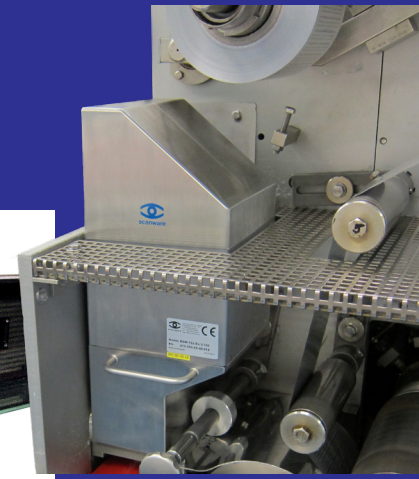
Hardware Development



scanware

In-House Development of units tailored to your needs:

- Housings - created for your line, including wiring
- Illuminations - WLED or UV perfect for your inspection environment
- Drawers, lifts and moving mechanics for your needs





Highest security
& failure-safety



Partnership
& Trust



In-house
development



Adaptable
to optimise
productivity



User-friendly
& intuitive



scanware electronic GmbH



Darmstädter Str. 9-11
D-64404 Bickenbach



+49 6257 9352-0



info@scanware.de



www.scanware.de

Quality is visible.

Follow us on:

