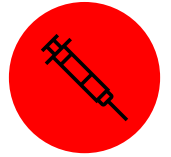


Packaging Inspection



PATERA CL Colour Parenterals Inspection



PATERA CL inspects pharmaceutical products intended for administration bypassing the intestinal tract, such as ampoules, vials, syringes and carpules. Usually the products are injected. The purpose of the system is to detect incorrect products and to prevent cross-contamination.

PRODUCT HIGHLIGHTS

5 Megapixels

resolution



Large product
variety

Low Contrast

inspection

Any questions?



+49 6257 9352 0



info@scanware.de



scanware.de



DESCRIPTION

- Criteria: Presence, colour, size, shape, perimeter, position and measurement of object distances, broken product, incomplete product
- Handling via a multi-touch display is highly intuitive and allows gesture recognition
- Teach-in is very effective and therefore enables quick product changeovers
- Software enables format tests and re-teaching
- Ideal for unique products and mixed product packaging



APPLICABLE OBJECTS



Ampoule



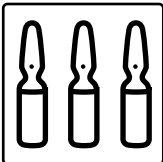
Vial



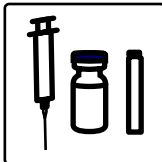
Carpoule



Syringe



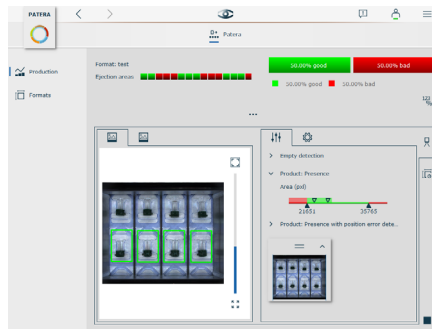
Product in tray



Mixed tray

ON SITE

After installation, the system is ready for immediate use. Furthermore, the fast teach-in allows for very quick changeovers on the line.



Very efficient teach-in allows a quick start of production



Handling via a multi-touch display is highly intuitive and allows gesture recognition

SCANWARE HIGHLIGHTS



Highest security & failure-safety



Partnership & Trust



In-house development



Customisable to optimise productivity



User-friendly & intuitive

