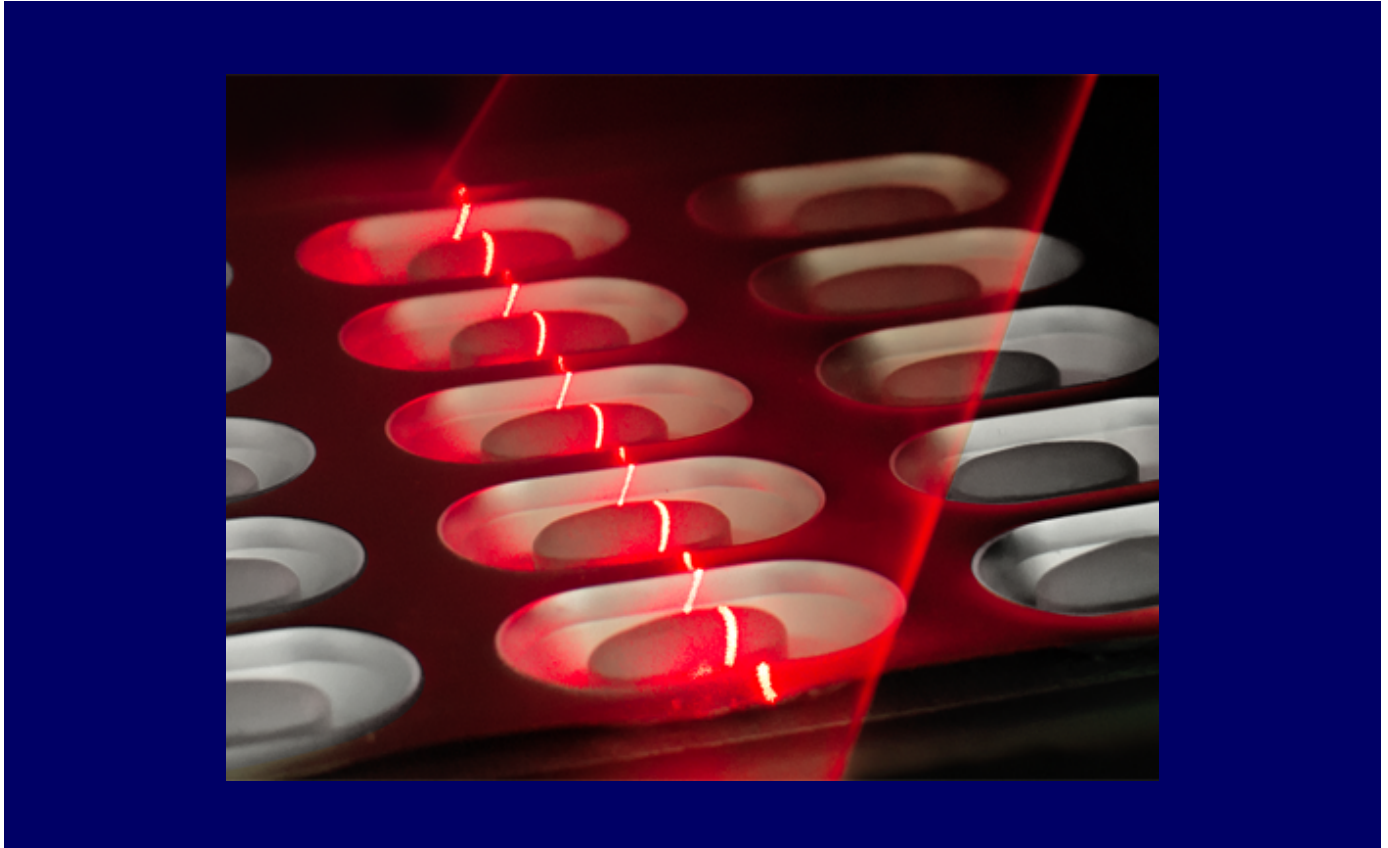




SPECTRA 3D ^{3D} 3D Product Inspection



SPECTRA 3D is a high-resolution, laser-based image processing system for the inspection of the geometry of packaging material and products to detect distortions, dents and other defects. The geometry of the inspected object is illuminated by a laser. The resulting image is captured by a high-resolution 3D line camera. The image is processed, digitised and evaluated.

PRODUCT HIGHLIGHTS

0.1 mm

height resolution

SI

units



Preventive Maintenance
of blister forming tools

Any questions?



+49 6257 9352 0



info@scanware.de



scanware.de



DESCRIPTION

- Criteria: Geometry, volume, presence, size, shape, position, broken product, overfilling, consecutive errors
- Particularly useful in low-contrast cases and with fragile products
- Can be combined with any vision system of the latest generation and operated via a single touch screen interface
- Highest quality control standards of volume and colour in combination with SPECTRA CL or SPECTRA HR



APPLICABLE OBJECTS



Tablet



Soft gel capsule



Multi-layered tablet



Hard gel capsule



Blister



Dry Powder



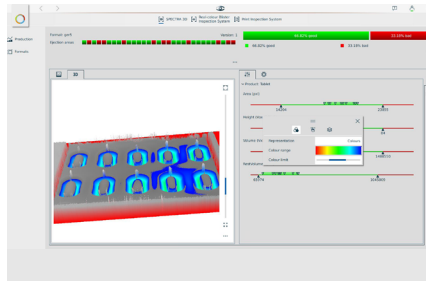
Oblong



Sugar-coated tablet

ON SITE

Where SPECTRA 3D inspects before filling, the forming of the blister can be evaluated. Detected errors in blister volume can be used to detect wear on thermoforming machinery early on, conduct preventive maintenance and ultimately, minimise line downtimes.



3D view of a live evaluation



Photo and evaluation view of blister inspection

SCANWARE HIGHLIGHTS



Highest security & failure-safety



Partnership & Trust



In-house development



Customisable to optimise productivity



User-friendly & intuitive

