

Track & Trace



CAPA BI Bundle Inspection



The station **CAPA BI** inspects folding boxes that have been combined into a bundle. Inspection of individual folding boxes is also possible. For bundle inspection, area scan cameras of the **SIGNUM 2DC** system are used to check 1D and 2D codes for readability and bundle completeness. Aggregation and serialisation of the data can be implemented using **IMPERA** Line Management.

PRODUCT HIGHLIGHTS

3

control positions
available

29

megapixels
resolution
as required



Connection to
Line Management

Any questions?



+49 6257 9352 0



info@scanware.de



scanware.de

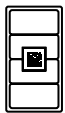


DESCRIPTION

- Criteria: Readability of 1D and 2D codes e.g. Code 128 and DataMatrix as well as completeness of bundles
- Different control positions possible (top, front and back)
- Equipped with a conveyor band (200 mm width)
- Where the camera is installed above, its height can be adjusted mechanically. This enables adjusting the image acquisition area to the bundle size.



APPLICABLE OBJECTS



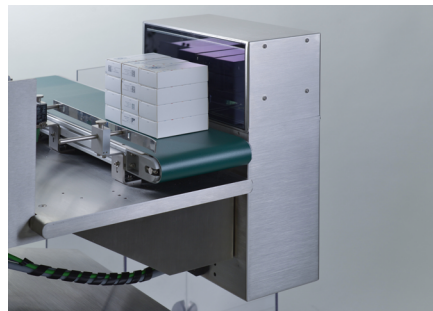
Bundle



Folding box

ON SITE

A pneumatic ejection system allows the bundle to be ejected when a fault is detected. A guide rail has been installed to guarantee that the bundles are guided in the correct position. This is also used for adjusting the format without tools (adjustable according to the bundle size).



Camera close-up



Pneumatic ejection system

SCANWARE HIGHLIGHTS



Highest security
& failure-safety



Partnership
& Trust



In-house
development



Customisable
to optimise
productivity



User-friendly
& intuitive

